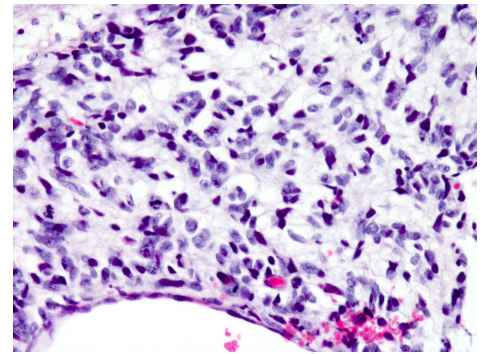


## Med-610FH

### Clinical annotation:

Age: 5.3  
Gender: Male  
Location: Cerebellum  
Diagnosis: Medulloblastoma, Anaplastic/Large Cell  
Pre-treatment: None  
Source: Surgery  
Stage: M1  
EFS (months): >60  
OS (months): >60

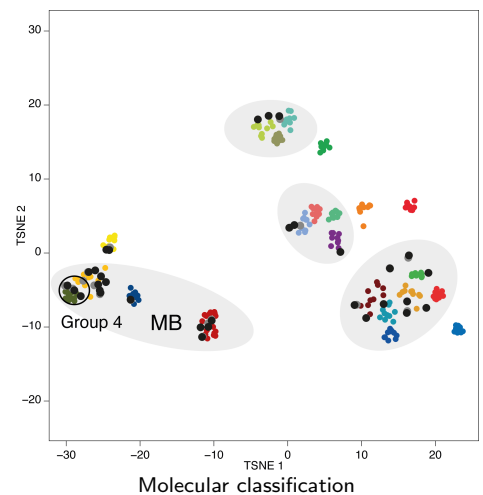


Histology of PDOX

Pathology of human tumor: *H&E stained sections contain sheets of small round blue cells with scant cytoplasm. The cells have variable nuclear morphologies including some multilobate nuclei and many angled nuclear contours. Numerous karyorrhectic debris is present and 25 mitotic figures are counted in five high power fields. Many examples of cytoplasmic "wrapping" around adjacent tumor cells are found. Regions contain cells arranged in some nests with intervening fibrous tissue with reactive inflammatory infiltrates consisting of lymphohistiocytes. No necrosis is identified, but a single focus of glomeruloid vascular proliferation is present.*

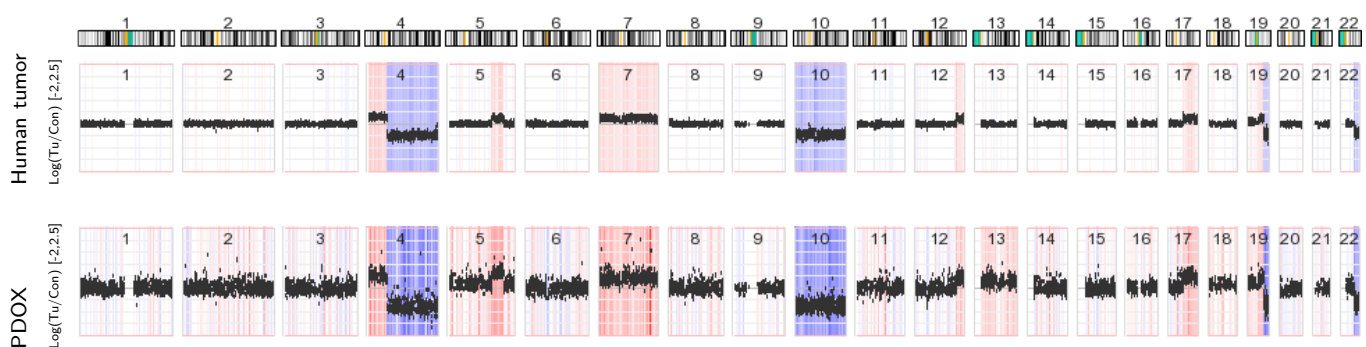
### Model information:

Mouse strain: [NOD scid gamma \(NSG\)](#)  
Site of transplantation: Cerebellum  
Protocol: [Olson lab PDOX protocol](#)  
Days to P0/P1/P2: 187/148/154  
PI: James M. Olson  
Contact: [Request model at www.btrl.org](http://www.btrl.org)



### Molecular information:

Entity: Medulloblastoma  
Subgroup: Group 4  
Curated lesions: *PRDM6* (activation: structural rearrangement + overexpression)  
Detailed information: [Explore molecular data in PDX explorer](#)  
[Explore genomic data of pediatric PDOX cohort](#)



Copy-number ratio (tumor vs. pseudo-control)