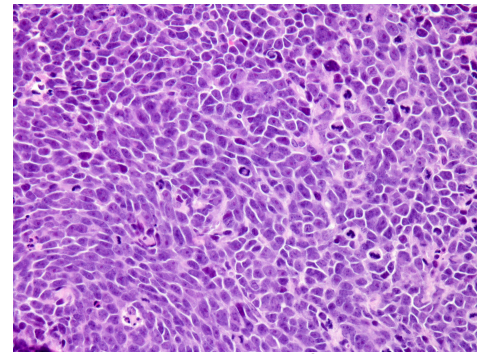


Med-411FH

Clinical annotation:

Age: 3
Gender: Male
Location: Cerebellum
Diagnosis: Medulloblastoma, Anaplastic/Large Cell
Pre-treatment: None
Source: Surgery
Stage: M0
EFS (months): 2.9
OS (months): >60

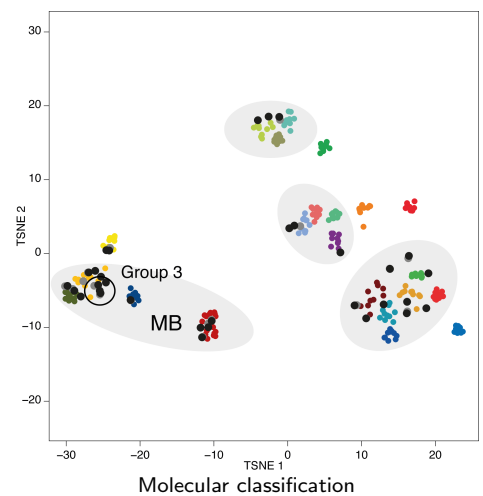


Histology of PDOX

Pathology of human tumor: *H&E stained slides show a cohesive small round blue cell neoplasm growing in sheets and infiltrating cerebellar folia. The neoplastic cells have enlarged, irregular nuclei with fine chromatin and prominent nucleoli. Occasional cells contain eosinophilic cytoplasmic inclusions. There are numerous mitotic figures and apoptotic bodies.*

Model information:

Mouse strain: [NOD scid gamma \(NSG\)](#)
Site of transplantation: Cerebellum
Protocol: [Olson lab PDOX protocol](#)
Days to P0/P1/P2: 34/29/39
PI: James M. Olson
Contact: [Request model at www.btrl.org](http://www.btrl.org)



Molecular information:

Entity: Medulloblastoma
Subgroup: Group 3
Curated lesions: *MYC* (amplification), isochromosome 17
Detailed information: [Explore molecular data in PDX explorer](#)
[Explore genomic data of pediatric PDX cohort](#)

