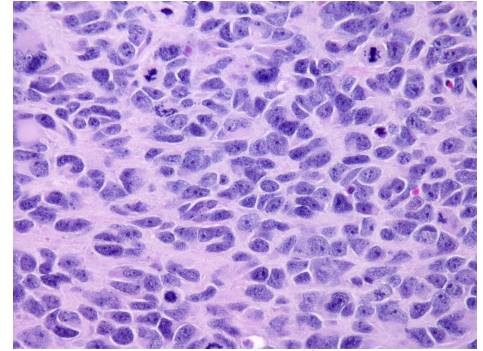


## Med-2312FH

### Clinical annotation:

Age: 2.8  
Gender: Female  
Location: Cerebellum  
Diagnosis: Medulloblastoma, Classic  
Pre-treatment: None  
Source: Surgery  
Stage: M3  
EFS (months): 15.5  
OS (months): 30.8

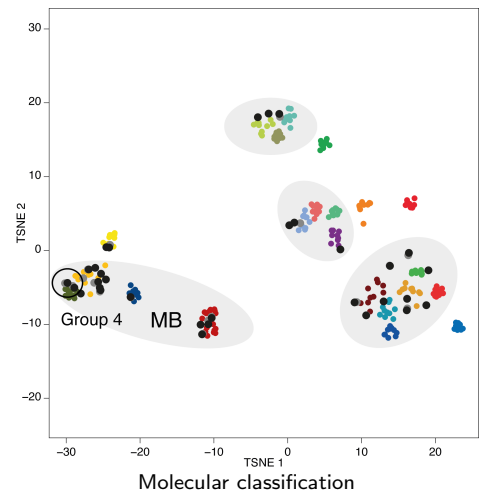


Histology of PDOX

Pathology of human tumor: *H&E stained sections show a densely cellular neoplasm which surrounds the cerebellum and appears to infiltrate meninges. The neoplasm is composed of round to oval cells with scant cytoplasm and hyperchromatic nuclei, arranged in nests, cords and sheets. Mitotic figures are numerous and there are regions of necrosis, including pseudopalisading. Tumor cells frequently abut vessels, which are prominent. Foci of larger cells are present with multinucleated forms, but overt anaplasia is not seen. The tumors are largely synaptophysin positive and GFAP negative. Diffuse Ki67 positivity is present.*

### Model information:

Mouse strain: [NOD scid gamma \(NSG\)](#)  
Site of transplantation: Cerebellum  
Protocol: [Olson lab PDOX protocol](#)  
Days to P0/P1/P2: 151/110/105  
PI: James M. Olson  
Contact: [Request model at www.btrl.org](http://www.btrl.org)



### Molecular information:

Entity: Medulloblastoma  
Subgroup: Group 4  
Curated lesions: Isochromosome 17  
Detailed information: [Explore molecular data in PDX explorer](#)  
[Explore genomic data of pediatric PDX cohort](#)

