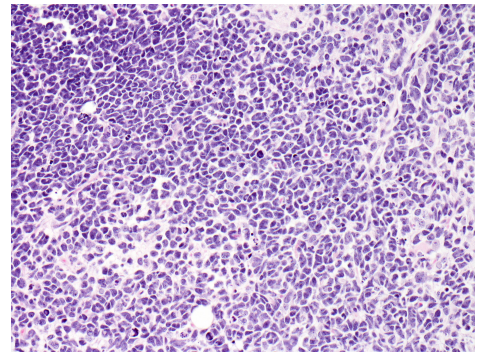


Med-210FH

Clinical annotation:

Age: 5.2
Gender: Female
Location: Cerebellum
Diagnosis: Medulloblastoma with myogenic differentiation
Pre-treatment: None
Source: Surgery
Stage: M0
EFS (months): >60
OS (months): >60

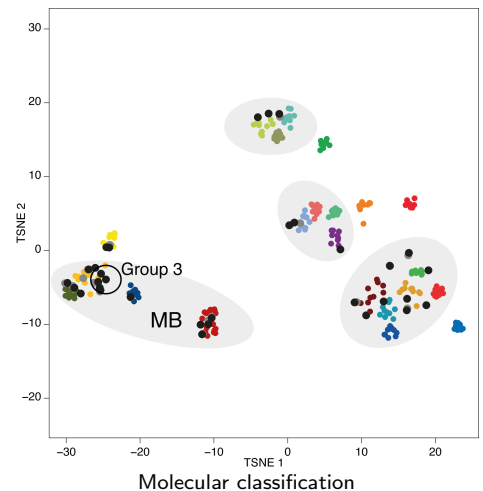


Histology of PDOX

Pathology of human tumor: Sections demonstrate a cellular round blue cell neoplasm composed of sheets of undifferentiated cells with minimal cytoplasm and hyperchromatic nuclei. The cells are often elongated and carrot-shaped. Myoblastic differentiation as evident by the presence of elongated strap cells with focal cross-striations present in a significant portion of the tumor (at least 30%). These cells stain for desmin. Microvascular proliferation and frequent mitotic figures are seen. Normal cerebellar tissue is present in part E with an infiltrating interface with the tumor.

Model information:

Mouse strain: [NOD scid gamma \(NSG\)](#)
Site of transplantation: Cerebellum
Protocol: [Olson lab PDOX protocol](#)
Days to P0/P1/P2: 186/224/118
PI: James M. Olson
Contact: [Request model at www.btrl.org](http://www.btrl.org)



Molecular information:

Entity: Medulloblastoma
Subgroup: Group 3
Curated lesions: -
Detailed information: [Explore molecular data in PDX explorer](#)
[Explore genomic data of pediatric PDOX cohort](#)

