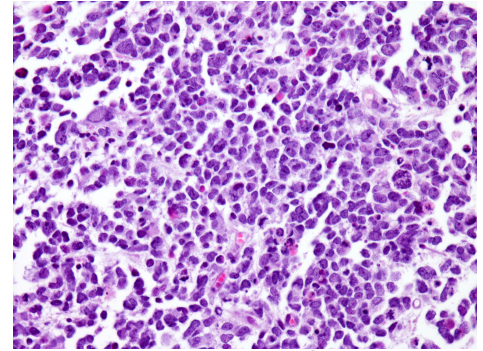


GBM-311FH

Clinical annotation:

Age: 10.8
 Gender: Male
 Location: Cortex, left temporal lobe
 Diagnosis: Glioblastoma Multiforme
 Pre-treatment: None
 Source: Surgery
 Stage: Localized at diagnosis, metastatic recurrence
 EFS (months): 4.3
 OS (months): 5.5

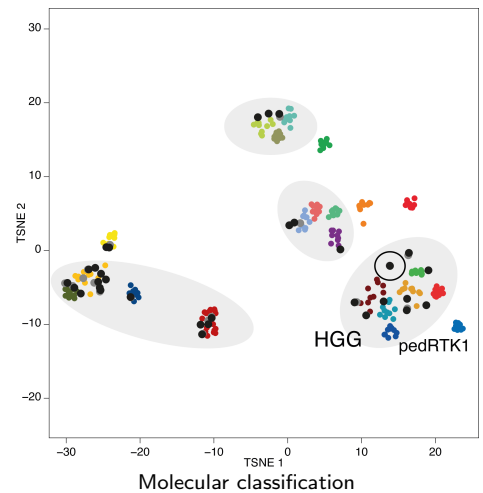


Histology of PDOX

Pathology of human tumor: *H&E stained sections show a pleomorphic neoplasm with extensive apoptosis and necrosis. Mitoses are abundant, including atypical forms. In some areas, the cells are small with minimal cytoplasm and in other areas they are giant with multinucleated, pleomorphic and hyperchromic nuclei and abundant cytoplasm. Focal areas have a somewhat spindled appearance and cells appear epithelioid in other regions. The background varies from dense and fibrillar to loose and myxoid with cystic degeneration. Endothelial proliferation is present. No Rosenthal fibers are identified.*

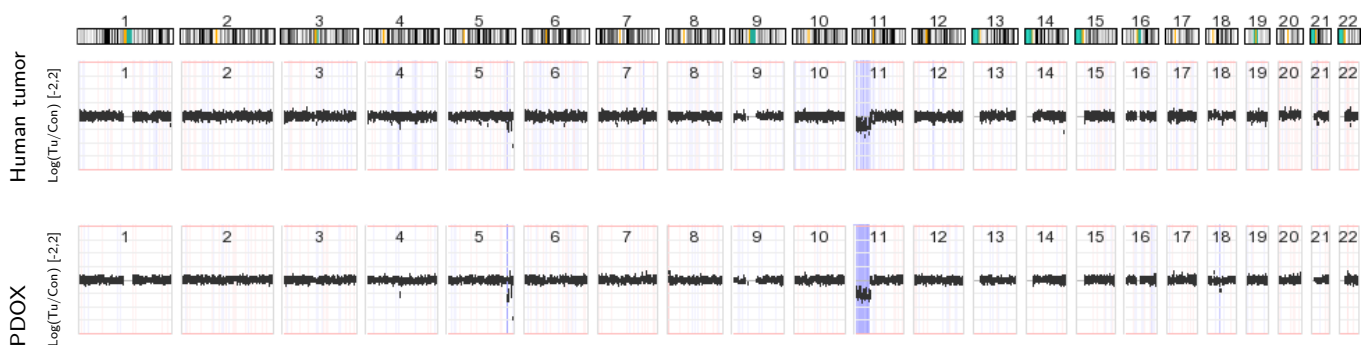
Model information:

Mouse strain: [NOD scid gamma \(NSG\)](#)
 Site of transplantation: Cortex
 Protocol: [Olson lab PDOX protocol](#)
 Days to P0/P1/P2: 85/77/79
 PI: James M. Olson
 Contact: [Request model at www.btrl.org](http://www.btrl.org)



Molecular information:

Entity: High-grade glioma
 Subgroup: pedRTK1
 Curated lesions: Hypermutator, *MSH2* (stopgain + splice site mutation), *ATRX* (missense mutation), *TP53* (missense mutation)
 Detailed information: [Explore molecular data in PDX explorer](#)
[Explore genomic data of pediatric PDX cohort](#)



Copy-number ratio (tumor vs. pseudo-control)